

Historic, Archive Document

Do not assume content reflects current scientific knowledge, policies, or practices.

207

Hardy Vines, Climbers, Creepers, Ferns, Aquatic and Bog Plants, Orchids, Bulbs, and Perennials

*Including Trilliums, Lilioms, Iris, Dicentra,
Galax, Phlox, Sedum, Shortia, Cyripediums,
and Many Others*



Trillium grandiflorum. See page 9

SPECIAL OFFERINGS FOR JULY AND AUGUST

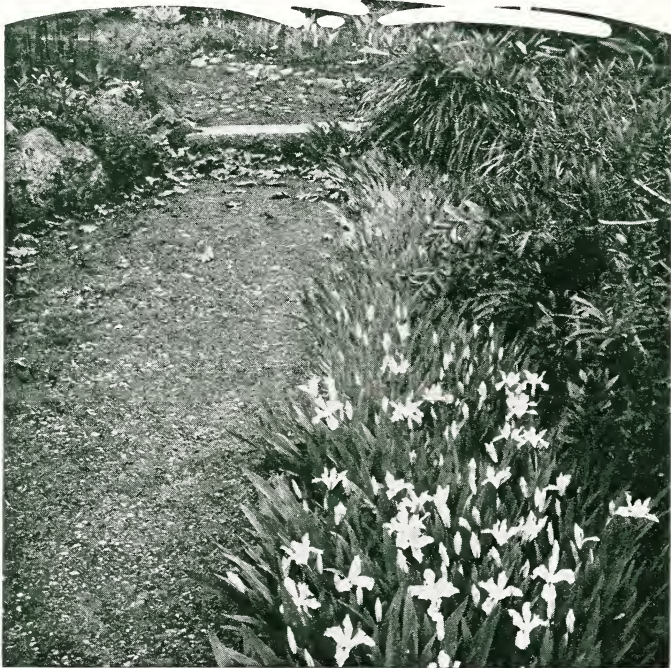
All for Planting in
Early Autumn, 1931

E. C. ROBBINS

Gardens of the Blue Ridge

ASHFORD (MCDOWELL COUNTY) NORTH CAROLINA

Western Union Telegraph and Bell Telephone Connections



Iris cristata

Native Mountain Wildings for Autumn Planting

Autumn is the logical time to move many of the native plants. In fact, all the natives in this list can be moved with entire safety in autumn, and when spring days come they will be ready to start off quickly.

The varieties here noted are but a small portion of those growing in my nurseries. They have been thus selected because I believe they will give the utmost satisfaction to my customers and friends. Particularly do I invite your attention to the Cypripediums, the Lilies, and the Trilliums, which are superb for naturalizing.

Some rare things are noted in the perennial list, too. I like the Cimicifugas, the Closed Gentian, the Lobelia, and the Violas. It would be impossible to select the *best plants* in the list, for all have a place in the garden, and when in a proper setting have a distinct value.

Prices in this list cancel all previous quotations. All prices net, f. o. b. Ashford, customer to pay transportation charges. This list void after Sept. 1, 1931

Hardy Vines, Climbers, and Creepers

AMPELOPSIS quinquefolia. Virginia Creeper. High-climbing vine, clinging to walls and trees, with beautifully colored foliage in autumn.	10	100	1,000
Extra-heavy stocky plants Each, 35 cts.	\$2 50	\$22 50	
CELASTRUS scandens. American Bittersweet. High-climbing vine. Very ornamental.			
1½ to 3 feet. Extra-strong plants. Each, 40 cts.	3 00	25 00	\$225 00

NOTE: 5 at 10 rate, 25 at 100 rate, 250 at 1,000 rate

HARDY VINES, CLIMBERS, AND CREEPERS, continued

CLEMATIS crispata. Curly Clematis. Graceful vine. Purple flowers in midsummer. Strong plants... Each, 40 cts...	10	100	1,000
	\$2 75	\$25 00	
virginiana. Virgin's Bower. Very popular hardy climber for general planting.			
Extra-strong stocky plants.....	1 50	12 00	\$100 00
DIOSCOREA villosa. Yam. Showy vine, with leaves turning golden yellow in autumn.			
Strong stocky plants.....	1 50	10 00	90 00
EPIGÆA repens. Trailing Arbutus. Charming plant, with very fragrant white or pink flowers.			
Strong clumpy plants..... Each, 30 cts...	2 00	12 00	110 00
GALAX aphylla. Galax. One of our best ground-cover plants for shady locations. The very ornamental bronze and green leaves are much used in florist's trade.			
Extra-strong stocky clumps..... Each, 25 cts...	1 75	11 00	100 00
GAULTHERIA procumbens. Wintergreen. Very desirable ground-cover, with brilliant green and bronze leaves. Bright red edible fruit in winter. Strong clumpy plants..	1 75	12 00	110 00
HOUSTONIA serpyllifolia. Creeping Bluets. 3 to 6 inches. Light blue or white, blooming about all summer. Splendid for rock-garden, potting, or border. Unlimited supply of this unusual ground-cover.....	1 75	12 00	110 00
<p>IRIS cristata. Crested Iris. Splendid ground-cover for shady or open locations. Leaves green; flowers blue. Extra-strong clumpy plants. \$1.75 for 10, \$12.50 per 100, \$110 per 1,000.</p>			
Iris germanica. German Iris. Vigorous-growing species with large, showy flowers of assorted colors.. Each, 40 cts...	3 00	22 50	200 00
verna. Vernal Iris. Blue flowers; splendid ground-cover. Strong clumpy plants.....	1 75	12 00	110 00
LONICERA japonica Halliana. Hall's Honeysuckle. Very strong-growing vine. Fragrant white and yellow flowers in summer and autumn. Best for trellises and ground-cover. Extra-strong plants.....	2 25	15 00	130 00
MITCHELLA repens. Partridge Berry. A splendid evergreen ground-cover, best suited to shady places. Flowers white or purple tinged. Berries bright red in winter. Strong clumpy plants.....	1 75	14 00	130 00
PHLOX stolonifera (P. reptans). Creeping Phlox. Free-growing ground-cover. Flowers reddish purple in early spring. Strong established clumpy plants.....	1 75	14 00	125 00
subulata. Moss Phlox. Evergreen ground-cover. Good for rockery and border planting. Flowers vary from white to pink, purple, and rose. Strong plants.....	2 25	18 00	165 00
SEDUM telephioides. Wild Liveforever. Fleshy leaves and flowers. Suitable for rockery and other dry situations. Strong plants..... Each, 35 cts...	2 50	20 00	175 00
ternatum. Mountain Stonecrop. Handsome creeping ground-cover with white flowers in early spring. Widely distributed. Strong established plants.....	1 50	11 00	100 00
SHORTIA galacifolia. Oconee-bells. Beautiful shade-loving evergreen ground-cover. Flowers nodding, pink and white, in very early spring. Strong established clumpy plants..... Each, 35 cts...	2 75	18 00	170 00

NOTE: 5 at 10 rate, 25 at 100 rate, 250 at 1,000 rate



Adiantum pedatum

Hardy Native Ferns

For shady locations, no class of plants can equal the Ferns. They are easily grown in ordinary soils and will often thrive where it is impossible to make flowering plants succeed. We handle large quantities of Ferns annually and recommend the following:

ADIANTUM pedatum. American Maidenhair Fern. Deciduous. One of the most distinct and beautiful. Strong established plants. \$1.75 for 10, \$12 per 100, \$110 per 1,000.

ATHYRIUM filixfemina. Lady Fern. Large deciduous Fern.	10	100	1,000
Exceedingly showy. Extra-strong plants.....	\$1 75	\$12 00	\$110 00
BOTRYCHIUM virginianum. Rattlesnake Fern. Deciduous.			
Triangular fronds, deeply cut. Showy. Strong plants..	1 75	12 00	110 00
DICKSONIA punctilobula. Hay-scented Fern. A very handsome, vigorous-growing deciduous species. Recommended for shade or open situations. Widely distributed. Extra-strong clumpy plants.....	1 25	11 00	100 00
DRYOPTERIS Goldiana. Goldie Fern.			
Strong plants..... Each, 50 cts....	4 00	32 50	
hexagonoptera. Winged Woodfern. Deciduous. Broad, triangular fronds. Strong plants.....	1 75	12 00	110 00
marginalis. Leather Woodfern. Robust, evergreen, showy species. Extra-strong stocky plants.....	1 75	14 00	125 00
spinulosa. Toothed Woodfern. Evergreen.			
Strong established plants.....	1 75	14 00	125 00
ONOCLEA sensibilis. Sensitive Fern. Deciduous. Suitable for dry or moist locations.			
Strong established plants.....	1 75	14 00	125 00
OSMUNDA cinnamomea. Cinnamon Fern. A stately, very large deciduous grower. XX strong stocky plants....	1 75	14 00	125 00
Claytoniana. Interrupted Fern. Deciduous. Very bold, attractive species. XX strong stocky plants.....	1 75	14 00	125 00
regalis. Royal Fern. Large, deciduous Fern, bearing attractive foliage. Strong stocky plants.....	1 50	13 50	127 50

HARDY NATIVE FERNS, continued

POLYPODIUM vulgare. Common Polypody. A charming little evergreen Fern. Excellent for rockery. Strong clumps.....	10	100	1,000
	\$1 75	\$15 00	\$125 00
POLYSTICHUM acrostichoides. Christmas Fern. Evergreen and extremely ornamental. Much used for florist's trade. Extra-strong plants, well established.....	1 25	10 00	90 00
PTERETIS nodulosa. Ostrich Fern. Strong, deciduous, bold-growing Fern of immense size. Extra-heavy established clumpy plants... Each 30 cts...	2 50	17 50	150 00
PTERIDIUM aquilinum. Bracken. Deciduous; tall-growing. Strong plants.....	1 25	9 00	75 00

SPECIAL COLLECTION: 100 Assorted Ferns, \$9.75

Hardy Aquatic and Bog Plants

ACORUS Calamus. Sweet Flag. Hardy waterside plant, with sword-shaped bright green leaves. Strong plants.....	10	100	1,000
	\$1 50	\$11 00	\$100 00
ASTER puniceus. Swamp Aster. Lilac-blue; tall-growing. Extra-strong plants.....	1 50	12 00	100 00
CALTHA palustris. Marsh Marigold. Beautiful marsh plant. Leaves bright green, heart-shaped. Flowers bright yellow, showy. Strong plants..... Each, 25 cts...	2 00	17 50	150 00
CHELONE glabra. White Turtlehead. Strong grower. Flowers white to rose. Suitable for dry or wet location. Strong plants.....	1 75	14 00	125 00
Lyoni. Pink Turtlehead. Flowers red or rose. Splendid bog plant. Extra-strong plants.....	1 75	14 00	125 00
CICUTA maculata. Spotted Water Hemlock. Grows 3 to 5 feet high, with cut leaves and greenish white flowers. Strong plants.....	1 00	9 00	75 00
DIONÆA muscipula. Venus' Flytrap. Strange and most unusual in that it captures flies and other insects for food. Rare and very interesting. Strong plants..... Each, 30 cts...	2 50	18 00	165 00
HEMEROCALLIS fulva. Tawny Day Lily. Stems 2 to 4 feet high. Flowers tawny orange. Very showy. Strong plants.....	2 00	16 50	140 00
IRIS pseudacorus. Yellow Flag. Stems 3 to 5 feet high. Large, sword-shaped leaves. Yellow flowers. Extra-strong plants..... Each, 35 cts...	2 50	20 00	175 00
versicolor. Blue Flag. Height 2 to 4 feet. Suitable for border planting along ponds and streams. Strong plants..... Each, 25 cts...	2 00	16 50	140 00
MERTENSIA virginica. Virginia Bluebells. Height 9 to 18 inches. Green foliage and showy blue flowers. Strong plants..... Each, 25 cts...	2 00	16 00	140 00
MONARDA didyma. Oswego Beebalm. Height 3 to 5 feet. One of our most brilliant perennials. Leafy stems with bright scarlet flowers. Strong plants.....	1 50	12 00	100 00
SARRACENIA flava. Trumpet Pitcherplant. Interesting bog plant. Height 1 to 2 feet. Yellowish green trumpet-shaped leaf. Flowers large, yellow, very conspicuous. Strong plants..... Each, 30 cts...	2 50	20 00	175 00
purpurea. Common Pitcherplant. Hardy plant 9 to 15 inches high. Succeeds best in mossy bogs. Flowers purplish yellow. Strong plants..... Each, 30 cts...	2 50	20 00	175 00

NOTE: 5 at 10 rate, 25 at 100 rate, 250 at 1,000 rate

HARDY AQUATIC AND BOG PLANTS, continued

SAXIFRAGA virginensis. Virginia Saxifrage. Height 6 to 18 inches. Lettuce-like foliage. Flowers white. Damp locations. Strong plants.....	10	100	1,000
	\$1 75	\$15 00	\$135 00
TYPHA latifolia. Common Cattail. Water-loving plant 4 to 8 feet high, widely distributed. Large green leaves. Flowers large brown spikes. Very pleasing. Strong plants.....	1 50	12 00	100 00
VACCINIUM macrocarpon. Cranberry. Slender, trailing plants, 1 to 4 feet, with pale pink nodding flowers in June, oblong leaves, and large, red, edible acid berries in late summer. Strong plants.....	1 75	14 00	130 00
VERATRUM viride. American False Hellebore. Height 2 to 4 feet. Yellowish green plant with large leaves. Succeeds well in either dry or moist soil. Flowers greenish white in early spring. XX strong plants.....			
Each, 30 cts.	2 75	20 00	175 00

Hardy Native Orchids

CALOPOGON pulchellus. Grass-pink Orchid. Height 1 to 1½ feet. Grass-like foliage. Pink-purple flowers. Showy and succeeds well in cultivation. Strong plants.....	10	100	1,000
	\$1 50	\$14 00	\$125 00
CYPRIPEDIUM acaule. Pink Lady Slipper. Height 6 to 15 inches. Thick clusters of leaves flat on ground. Large, purple, upright flowers in early spring. Medium size... Extra-strong plants.....	1 00	9 00	85 00
Each, 30 cts.	2 50	22 50	200 00
pubescens. Common Lady Slipper. Height 12 to 20 inches. Flowers bright yellow, in May. Medium size..... Strong plants.....	1 00	9 00	85 00
Each, 30 cts.	2 50	22 50	200 00
spectabile. Showy Lady Slipper. Height 1 to 2½ feet. Strong grower in peat soils. White to rose-color flowers in June and July. By far the best of all Cypripediums. We have splendid stock of several thousand strong clumps, and shipment can be made promptly. Extra-strong, 1 to 3 flowering crowns to each plant. Each, 60 cts.	5 00	40 00	375 00
XX heavy clumpy plants, 4 to 6 flowering crowns. Each, \$2.	17 50	150 00	



Cypripedium acaule

HABENARIA ciliaris. Yellow Fringe Orchid. Height 12 to 20 inches. Yellow flowers. Very handsome free bloomer. Suitable for rockery. Strong plants	1 75	15 00	140 00
psycodes. Small Purple Fringe Orchid. Height 9 to 18 inches. Best suited to shade. Strong plants. Each, 25 cts.	2 00	17 50	160 00
ORCHIS spectabilis. Showy Orchid. Height 6 to 12 inches. Flowers showy pink-purple, in early spring. Best adapted to shade. Strong plants..	1 75	15 00	125 00



Dicentra eximia

Hardy Native Lilies and Bulbous Plants

ARISÆMA triphyllum. Jack-in-the-Pulpit. Height 2 to 2½ feet. Strong, fleshy top and conspicuous greenish white flowers. Extra-strong plants.	10	100	1,000
	\$1 75	\$14 00	\$125 00
CONVALLARIA majalis. Lily-of-the-Valley. Height 6 to 18 inches. Soft green leaves. Flowers fragrant, white. Of easy cultivation, preferring partial shade. Strong plants.	1 75	12 00	100 00

DICENTRA eximia. Fringed Bleeding-heart. Height 10 to 18 inches. Graceful, fernlike foliage and deep rose flowers, nodding in slender scape-like racemes all summer. A splendid rock-garden subject. Medium size.	10	100	1,000
Strong plants. Each, 35 cts.	2 50	17 50	160 00

ERYTHRONIUM americanum. American Troutlily. Height 5 to 10 inches. Green, mottled leaves with bright yellow flowers in very early spring. Strong bulblets.	1 00	8 00	60 00
LILIUM canadense. Canada Lily. Slender stems 2 to 4 feet high. Flowers in various shades of orange, yellow, and red. Very ornamental. Strong flowering-size bulbs.	2 75	24 00	200 00
carolinianum. Carolina Lily. Height 3 to 4 feet. Leaves verticillate. Flowers orange-red and extremely fragrant. No Lily collection complete without this rare variety. Extra-strong first-size flowering bulbs. Each, 30 cts.	2 75	22 50	200 00
Grayi. Gray's Lily. Height 2 to 4 feet. A beautiful Lily, with deep reddish bell-shaped flowers, orange spotted within. Exceedingly showy and continues to grow in demand. My stock is sufficient to meet demands. Early orders solicited. Strong first-size bulbs.	2 75	24 00	212 50
philadelphicum. Orange-cup Lily. Height 1 to 3 feet. Reddish orange flowers, with purple spots. Flowering-size bulbs.	2 50	22 50	200 00

NOTE: 5 at 10 rate, 25 at 100 rate, 250 at 1,000 rate



Lilium superbum

HARDY NATIVE LILIES AND BULBOUS PLANTS, continued

Lilium superbum. American Turkscap Lily. Height 3 to 8 feet. Flowers with dark purple spots, inside bright orange. The finest and most-used American Lily for massing among shrubbery and in border plantings. Often more than forty large flowers on a single stem. We are headquarters for this famous Lily and have more than 300,000 flowering bulbs on hand for autumn delivery. Early orders solicited and will have best attention.

	10	100	1,000
XX largest select bulbs	Each, 50 cts. \$4 00	\$32 50	\$300 00
First-size extra-select flowering bulbs, splendid average. . .	1 50	12 50	100 00
Second-size, mostly flowering bulbs	1 00	6 00	50 00

SPECIAL OFFER FOR TRIAL: 100 assorted Lilies, strong flowering size, for \$16.75

	10	100	1,000
NARCISSUS. Assorted, home-grown, strong.	\$1 25	\$8 00	\$70 00
TRILLIUM erectum. Purple Trillium. Large, very ornamental plants, 9 to 18 inches high. Flowers brown to purple; large red fruit. Early, vigorous spring bloomer. More than 35,000 ready for immediate shipment. Recommended for border and woodland planting.			
Extra-strong first-size bulbs.	1 25	8 00	60 00
stylosum. Rose Trillium. Height 10 to 18 inches. Large, rose-pink nodding flowers. Rare and beautiful southern species. Strong first-size flowering bulbs.	1 75	12 00	90 00

HARDY NATIVE LILIES AND BULBOUS PLANTS, continued

Trillium grandiflorum. Snow Trillium. The finest and largest species. Flowers 2 to 3 inches across, in early spring; white turning to rose color. One of our best spring bloomers. We have more than 100,000 strong flowering bulbs for prompt shipment. This plant flourishes and blooms to perfection in woodland and border plantings and cannot be recommended too highly for general use. Early orders solicited. Samples will be sent on request.	10	100	1,000
XX largest, unusually heavy bulbs.....	\$1 75	\$14 00	\$100 00
Extra first-size bulbs. Real bargain.....	1 25	8 00	60 00

Trillium undulatum. Painted Trillium. Very strong, vigorous grower. Height 8 to 15 inches. Earliest bloomer of all Trilliums. Large flowers with scarlet and white markings. Extra-strong first-size bulbs.....	10	100	1,000
	\$1 25	\$8 00	\$60 00

SPECIAL OFFER: 100 first-size assorted Trilliums, for \$8.50

Hardy Native Herbaceous Perennials

This list contains a variety of Herbaceous Plants furnishing a succession of bloom from early spring to late autumn, all having been tried out with success in cultivation. The height specified indicates the approximate height of each plant as found in wild state. The time of blooming naturally depends on locality.

ACONITUM uncinatum. Clambering Monkshood. Height 3 to 6 feet. Blue, hood-shaped flowers. Strong established plants.....	10	100	1,000
	\$1 50	\$12 00	\$110 00
ACTÆA alba. White Baneberry. Height 1½ to 3 feet. Flower-stalk red; white flowers and berries. Strong plants.....	1 75	14 00	130 00
rubra. Red Baneberry. Height 1 to 3 feet. White flowers in May; red berries. Strong established plants.....	1 75	15 00	140 00
ARALIA racemosa. American Spikenard. Height 2 to 5 feet. Smooth stem; large compound leaves; white panicle flowers in July. Extra-strong plants.....	1 75	14 00	130 00
ARUNCUS sylvester. Goatsbeard. Height 4 to 6 feet. Cut leaves and white flowers in May and June. Extra-strong established plants.....	1 75	14 00	125 00
ASARUM Shuttleworthi. Mottled Wild Ginger. Evergreen. Leaves large, round, heart-shaped. Strong clumpy plants.....	1 75	15 00	135 00
ASCLEPIAS incarnata. Swamp Milkweed. Leafy stems 2 to 3 feet high, with narrow, pointed leaves and small purple-pink flowers. Prefers moist situation. Extra-strong plants..... Each, 25 cts....	2 00	15 00	
tuberosa. Butterfly Weed. Height 1 to 2 feet. Very showy orange or red flowers. Strong stocky plants.....	2 00	17 50	160 00
BAPTISIA tinctoria. Yellow Wild Indigo. Height 2 to 3 feet. Abundant yellow flowers in June. Showy. Extra-heavy clumpy plants..... Each, 25 cts....	2 00	15 00	135 00
CAMPANULA divaricata. North Carolina Harebell. Height 1 to 2 feet. Flowers pale blue, bell-shaped, in July. Good for rocky. Strong plants.....	1 75	14 00	125 00
CAREX Fraseri. Fraser Sedge. Height 9 to 18 inches. Rare, broad-leaved evergreen. White flowers in spikes, in March. Best suited for shade. Extra-strong plants....	2 50	17 50	150 00

NOTE: 5 at 10 rate, 25 at 100 rate, 250 at 1,000 rate

HARDY NATIVE HERBACEOUS PERENNIALS, continued

CAULOPHYLLUM thalictroides. Blue Cohosh. Height 2 to 3 feet. Yellowish green flowers in April. Fruit blue and showy. Strong plants.....	10	100	1,000
	\$1 00	\$9 00	\$75 00
CHAMÆLIRIUM luteum. Fairy Wand. Height 1 to 2 feet. Spike of small flowers in June. Showy. Strong plants.	1 25	10 00	90 00
CIMICIFUGA americana. American Bugbane. Height 3 to 6 feet. Flowers showy, white, in August. Leaves divided. Extra-strong stocky plants.....	1 50	11 00	100 00
racemosa. Cohosh Bugbane. Height 4 to 8 feet. Flowers white; decompound leaves. Extra-strong stocky plants.....	1 50	10 00	90 00
CLINTONIA borealis. Bluebead. Height 6 to 12 inches. Greenish yellow flowers in June. Showy species. Strong plants.....	1 50	12 00	90 00
umbellulata. Speckled Clintonia. Height 9 to 15 inches. Fragrant white flowers in June. Strong plants.....	1 50	12 00	90 00
DIPHYLLEIA cymosa. Umbrella Leaf. Height 1 to 3 feet. Large-lobed leaves. Flowers white, in May. Purple showy fruit in bunches. Prefers moist location. Extra-strong plants.....	1 50	13 50	
DISPORUM lanuginosum. Fairy Bells. Height 1 to 3 feet. Greenish flowers in May. Fruit red and drooping. Strong plants.....	1 50	13 50	
DODECATHEON Meadia. Common Shooting Star. Height 9 to 18 inches. Flowers pink, purple and white. Extremely showy. April. Strong plants... Each, 30 cts...	2 25	18 00	175 00
EUPATORIUM purpureum. Joe-Pye-weed. Height 4 to 8 feet. Flowers purple, in large panicles, in June. Extra-strong plants.....	1 75	12 00	100 00
EUPHORBIA corollata. Flowering Spurge. Height 1 to 4 feet. Flowers white, in August. Strong plants.....	1 50	12 50	115 00
GENTIANA Andrewsii. Closed Gentian. Height 10 to 18 inches. Foliage green; blue closed flowers in September. Strong established plants.....	1 25	11 00	90 00
GEUM montanum. Mountain Avens. Geranium-like leaf with golden yellow flowers in midsummer. Strong transplanted..... Each, 25 cts...	2 00	17 50	160 00
GILLENIA trifoliata. Bowmansroot. Height 2 to 4 feet. Handsome cut foliage; flowers pure white or rose tinted, in June. Splendid for massing among shrubbery. Extra-strong plants.....	1 50	11 00	90 00
HELENIUM autumnale. Common Sneezeweed. Height 3 to 5 feet. Handsome yellow flowers in August. Extra-strong clumpy plants.....	1 50	12 00	100 00
HEPATICAC acutiloba. Sharplobe Hepatica. Height 5 to 10 inches. White and purple flowers in March and April. Strong plants.....	1 50	11 00	90 00
triloba. Roundlobe Hepatica. Height 6 to 8 inches. Flowers blue, purplish or white, in April. Strong plants.....	1 75	15 00	140 00
HEUCHERA americana. American Alumroot. Height 1 to 2 feet. Large-lobed leaves, beautifully mottled bronze in early winter. Flowers greenish white in June. Splendid rock-garden subject. Strong plants.....	1 50	12 50	100 00
villosa. Hairy Alumroot. Height 12 to 18 inches. Good for rockery. Flowers white, in August. Strong plants.....	1 25	10 00	80 00

HARDY NATIVE HERBACEOUS PERENNIALS, continued

HOUSTONIA purpurea. Mountain Houstonia. Height 6 to 10 inches. Purple flowers in July.	100	1,000
Strong clumpy plants.....	\$1 25	\$10 00 \$90 00
HYDRASTIS canadensis. Golden Seal. Height 10 to 20 inches. A medicinal herb of great value. We have a large stock of this item on hand and can make prompt shipment on size named and seeds.		
Extra-strong three-year clumpy plants... Each, 25 cts...	1 75	14 00 110 00
NOTE: Special prices for large quantities of seeds or plants		
LIATRIS spicata. Spike Gayfeather. Height 3 to 5 feet. Purple flower-spikes in August.		
Strong established plants.....	1 75	14 00 130 00
LOBELIA cardinalis. Cardinal Flower. Height 3 to 5 feet. Showy scarlet flowers in August.		
Extra-strong established plants.....	1 75	14 00 130 00
siphilitica. Large Blue Lobelia. Height 1 to 3 feet. Flowers large, blue, last of August.		
Extra-strong established plants.....	1 75	14 00 130 00
PANAX quinquefolium. American Ginseng. Height 1 to 3 feet. Great Chinese medicinal herb. Fast becoming rare and scarce. We have splendid stock on hand in all sizes ready for prompt shipment.		
Extra-strong three-year established plants.. Each, 30 cts..	2 50	20 00 175 00
NOTE: Special quotations on large quantities of seeds and plants		
PHLOX divaricata. Blue Phlox. Height 10 inches. Bears a profusion of large, fragrant, lavender flowers in May.		
Strong, established plants	2 00	18 00 165 00
PODOPHYLLUM peltatum. Common May Apple. Height 1 to 1½ feet. Large light green leaves. White flowers in May. Prefers shade. Strong established plants.....	1 25	10 00 85 00
POLYGONATUM commutatum. Great Solomon's Seal. Height 3 to 6 feet. Drooping greenish white flowers in June. Extra-strong established plants.....	1 50	11 00 90 00
SANGUINARIA canadensis. Bloodroot. Height 5 to 8 inches. One of our best perennials. Large white flowers in early spring. Strong plants.....	1 25	10 00 80 00
SAXIFRAGA Michauxi. Michaux Saxifrage. Height 9 to 18 inches. Rare alpine variety. Flowers white with pink markings. Strong plants..... Each, 30 cts...	2 50	18 00 175 00
SILENE stellata. Starry Campion. Height 2 to 4 feet. Flowers in white showy panicles in July. Strong plants..	1 50	13 50 112 00
virginica. Fire Pink. Very showy crimson flowers in June. Strong established plants..... Each, 25 cts...	2 00	18 00 175 00
SMILACINA racemosa. False Solomon's Seal. Height 2 to 3 feet. White flowers in June. Red speckled berries in August. Strong established plants.....	1 50	11 00 90 00
SOLIDAGO odora. Fragrant Goldenrod. Height 2 to 4 feet. Yellow flowers in August and early September.		
Strong established plants.....	1 50	12 00 100 00
STENANTHIUM robustum. Featherfleece. Long, white, delicate flowers on stems 3 to 5 feet high in late summer. Extremely ornamental and altogether one of our finest perennials. Thrives in damp situations as well as in drier soil. Extra-strong first-size established plants....	2 00	16 00 140 00
UVULARIA perfoliata. Wood Merrybells. Height 6 to 18 inches. Pale yellow flowers in early spring.		
Strong plants.....	1 50	12 00 100 00
sessilifolia. Little Merrybells. Height 10 to 20 inches. Yellow flowers in May. Strong plants.....	1 50	12 00 100 00



Cypripedium spectabile. See page 6

HARDY NATIVE HERBACEOUS PERENNIALS, continued

VIOLA blanda. Sweet White Violet. Height 2 to 4 inches.	10	100	1,000
Fragrant white flowers in early spring.			
Strong clumpy plants.....	\$1 50	\$12 00	\$90 00
cucullata. Blue Marsh Violet. Height 6 to 10 inches. Blue flowers all summer. Strong established plants.....	1 50	12 00	90 00
lanceolata. Lancelike Violet. Smooth, lance-shaped leaves, unlike those of the common Violet. Thrives in damp soil. Strong established plants.....	1 50	14 00	
pedata. Birdsfoot Violet. Height 3 to 7 inches. Showy blue flowers in May. Strong established plants.....	1 25	11 00	100 00
pedata bicolor. Two-color Birdsfoot Violet. Height 4 to 6 inches. Velvety light blue and purple flowers in May. Rare, pansy-like. Strong established plants.....	1 75	15 00	135 00
rotundifolia. Roundleaf Violet. Height 3 to 4 inches. Large yellow flowers in early spring. Large prostrate shining leaves. Strong established plants.....	1 25	12 00	110 00
sagittata. Arrowleaf Violet. Height 4 to 8 inches. Deep blue flowers in May. Strong established plants.....	1 25	12 00	110 00
XEROPHYLLUM asphodeloides. Turkeys-beard. Height 3 to 5 feet. Long grass-like leaves. Tall spikes of very attractive white flowers. Rock-garden subject.			
Extra-strong stocky plants..... Each, 25 cts...	2 00	16 00	150 00
YUCCA filamentosa. Common Yucca. Height 3 to 8 feet. Large panicles of white flowers in July and August.			
Extra-strong established clumpy plants..... Each, \$1..	8 50	75 00	
flaccida. Weakleaf Yucca. Height 2 to 5 feet. Stiff, narrow leaves. White flowers in June and July.			
Established plants..... Each, 50 cts...	4 00	30 00	

SPECIAL OFFER. 100 Assorted Perennials, furnishing a succession of flowers from early spring to fall, for only **\$12.50**

Early Orders Solicited. Send for complete Catalogue, ready September 1, listing Azaleas, Rhododendrons, and hundreds of other native ornamentals

E. C. ROBBINS

Gardens of the Blue Ridge

Ashford, North Carolina